

PROGRAM COMMITTEE REPORT

After a summer's hard work with our architects, Chuck Redmon and Ernie Barbie, we have come up with a tremendously exciting architectural program for the new Museum headquarters. In it we have tried to describe an economical and functional envelope to house the Museum's core program on a compact downtown site. Its main features include:

- a lively, multi-leveled EXHIBIT/PROGRAM AREA, much like our Visitor Center but with three times the floor area to comfortably absorb 2-3,000 visitors a day. (Our present staff and facilities easily accommodate 800, begin to feel strained at 1,200 and have been wiped out on several occasions by more than 1,800 visitors on a single day.) This program assumes no more than doubling our present exhibit topics and visitor staff.
- direct access from the exhibit/program space to two comfortable BROWSING AREAS where, with the help of a staff BROKER, the visitor can begin in-depth explorations of a topic by using open shelf reference materials (books, recordings, film loops, computer terminals, games, kits); by signing up for ongoing programs (courses, workshops, clubs); or consulting with knowledgeable members of the staff or outside professional or amateur communities. These spaces would resemble and are designed to function like the reference areas on the first floor of our present Resource Center, except that unaccompanied children would be welcomed.
- two floors (with room for adding a third in the future) of WORKSHOP/CLASSROOMS and STAFF OFFICES, with some protection from the casual visitor, but adjacent to the browsing and collection areas. ADMINISTRATIVE OFFICES and a STAFF LOUNGE are located at the elbow of these floors to provide a central meeting ground for everyone. The assumption is that this space is easily subdivided and rearranged to accommodate to changing staff and program needs.
- two seven-level, COLLECTIONS STACKS offer high visibility and limited access from the exhibit/program space; direct access from workshop, staff and browsing areas and complete climatic control and security for the Museum's fascinating natural history specimens and cultural artifacts.

- a free access ground floor with space for the Museum's "retail" functions (RECYCLE, CIRCULATING DEPARTMENT, CHILDREN SHOP, TEACHER SHOP): a self-supporting CAFETERIA with seating for 100-150; a MULTI-PURPOSE AUDITORIUM with moveable seating for up to 200 that can be used as an orientation hall for school groups, as a children's cinema or theatre, as an exercise room, as a video or film production studio, or in other functions requiring large, uncluttered space, a pleasant PARK with greenery, water, play equipment, and benches; and an ADMISSIONS CONTROL point with a check room for COATS. Our hope is that the ground floor will be able to comfortably absorb up to a thousand visitors waiting to get in on a busy day.
- a basement level housing SHIPPING & RECEIVING, MAINTENANCE, DESIGN & PRODUCTION and STORAGE AREAS.

These functions are accommodated with considerable ingenuity in two very different structures, joined by a third:

- The first element is a "big space" SYSTEMS BUILDING. Like a hangar, armory, theatre or gym it allows maximum horizontal and vertical flexibility within a unified volume, as the entire interior span is clear of supporting columns.
- The second unit is a conventional LOFT BUILDING. It resembles an old New England mill or modern office building in that there are regular supports, but no interior structural partitions to limit the layout or subdivision of space on each floor.
- The radically new third elements are two VERTICAL CORES that link the loft and systems buildings. They house the collection stacks, emergency stairs, elevators, heating, ventilation and air conditioning ducts and perhaps even bathrooms and other mechanical systems.

Many arrangements of these elements are possible. Scheme A illustrates a very compact option designed to occupy as little as 25,000 square feet of high cost downtown land. (By contrast the present Museum facilities sprawl over 115,000 feet.) Scheme B is a little more spread out and might require as much as 40,000 feet. The major differences in Scheme B are that the systems building is subdivided into three more intimate units, each about the size of our present Visitor Center; and that the loft building has become T-shaped, with the browsing area thrust into a location central to the three exhibit/program areas.

Some further rearrangement of the program elements is possible. However, we believe that a compact, multi-level, rather than a vast single story plan will best accommodate our needs and be reasonably economical to build and maintain.

Neither of these schemes says very much about the envelope into which this program could be set. It would be possible to build our headquarters entirely from scratch as a self-contained facility. Or we could acquire an existing loft or systems building and weld the other two elements to it. Or we could be part of a larger development shared with other institutional or commercial functions. If we shared space in this way, the cost of constructing and maintaining (and the income derived from) the park, auditorium and cafeteria could be shared, or borne entirely by the developer.

The total program comes to 70,000 square feet of net useable space. This compares to 30,000 feet in our present buildings. If the 15,000 feet assigned to such new functions as the park, cafeteria and auditorium/multi-purpose room are subtracted, we end up with 85% more space to house a modest expansion of our current programs. Adding johns, halls, stairs, elevators, ducts, walls, etc. to the total net we arrive at a gross area of approximately 90,000 square feet. The gross area is usually multiplied by some number of dollars per square foot to arrive at the estimated costs of constructing, furnishing and fixturing the facility.

Many questions remain to be resolved by the Program, Site & Development Committees in consultation with our architects and fund raising counsel, and with real estate developers and other institutions. For example:

- Is the Museum's need for a multi-purpose/auditorium room compelling enough, and/or can it generate significant enough rental or admission income to justify its inclusion in the program?
- Should initial access to the upper exhibit/program areas be in a large elevator or by a more costly, but interesting escalator?
- Would the exhibit/program area work better as a large single space or be subdivided into three smaller modules?
- Should the browsing area be a part of the quieter loft building or pushed out into the busy orienting area of the systems building?
- Should we build the fourth level of the loft building during the initial construction phase and rent it out on short-term leases, or delay its construction until the Museum needs the space?

- Is a self-contained or multi-use development more desirable programatically and economically?
- What are our criteria for entering into a multi-use development?
- If we go to a multi-use development, what are the advantages to our being the developer vs. our renting from another developer?
- What will be the cost of land acquisition, construction, furnishing and fixturing, moving, exhibits, fund raising, annual maintenance or rental for various options we might develop?

This report has attempted to rough out the Museum's building program needs with enough clarity so that we can push ahead to answer the questions of where we shall locate, what sort of building we will occupy and how it will all be financed. It is clearly the product of a lot of thoughtful input from a variety of points of view. No single person can lay claim to having authored its critical features. And yet, unlike the horse designed by the committee, we have not produced a camel. Instead, we have given birth to an extraordinarily imaginative, coherent and utilitarian beast.

We hope you find this report stimulating and useful, and that we can move on vigorously to the next stages of planning.

PROGRAM COMMITTEE

Pat Cornu
 Tally Forbes
 Elaine Gurian
 Janet Kamien
 Bob Lloyd
 Bruce MacDonald
 Jean McGuire
 Phyl O'Connell
 Chuck Redmon
 Judy Sapers
 Mike Spock
 Dan Taylor
 Jephtha Wade
 Jim Zien
 Bernie Zubrowski

EXISTING PROGRAM

PROPOSED PROGRAM

100¢
↓

| | |
|--------------------------|---------|
| EXHIBIT PROGRAM 7400¢ | 19,400¢ |
|--------------------------|---------|

| | |
|----------------------|-------|
| COLLECTIONS 6040¢ | 9000¢ |
|----------------------|-------|

| | |
|--------------------|-------|
| WORKSHOPS 1410¢ | 3600¢ |
|--------------------|-------|

| | |
|----------------|---------|
| STAFF 6480¢ | 11,960¢ |
|----------------|---------|

| | |
|---------------------------|--|
| STORAGE 7400¢ 7030¢ | |
|---------------------------|--|

| | | | |
|-----------------|--|--|---------|
| RETAIL 1500¢ | | | 10,000¢ |
|-----------------|--|--|---------|

| | | |
|------|--|----------------|
| PARK | EXISTING OUTDOOR SPACE / INDIANS ANIMALS | 7500¢ 8000¢ |
|------|--|----------------|

8.30.73 - SPACE PROGRAM BY FUNCTION

2

THE CHILDREN'S MUSEUM

EXHIBIT PROGRAM

COLLECTIONS

CIRCULATING COLLECTION
BROWSING & REF. COLLECTION
ARTIFACTS & SPECIMEN COLL.

WORKSHOPS

STAFF

VISITOR CENTER
RESOURCE CENTER
COMMUNITY SERVICES
ADMINISTRATION
DESIGN & PRODUCTION
ANIMAL CARE
SHIPPING & RECEIVING
MAINT. OFFICE

STORAGE

VISITOR CENTER
RECYCLE
CHILDREN SHOP
DESIGN & PRODUCTION
GENERAL STORAGE

RETAIL

RECYCLE
CIRCULATING COLLECTION
TEACHER SHOP
CHILDREN SHOP
ADMISSIONS
AUDITORIUM / MULTI-PURPOSE
CAFETERIA

PARK [EXISTING
OUT DOOR AREAS / INDIANS /
ANIMALS]

PROPOSED

19,400 \$

9,000 \$

1,500

1,500

6,000

3600 \$

11,960 \$

1680

1740

1490

3250

* 1800

800

1000

200

7,400 \$

2000

1500

1000

* 400

* 2,500

10,000 \$

500

500

500

1000

500

* 3000

* 4000

* 8,000 \$

EXISTING

7,400 \$

6,040 \$

1360

810

3870

1,410 \$

6,480 \$

670

970

1000

1960

1540

50

—

290

7,030 \$

1950

1600

350

330

2800

1,500 \$

400

100

200

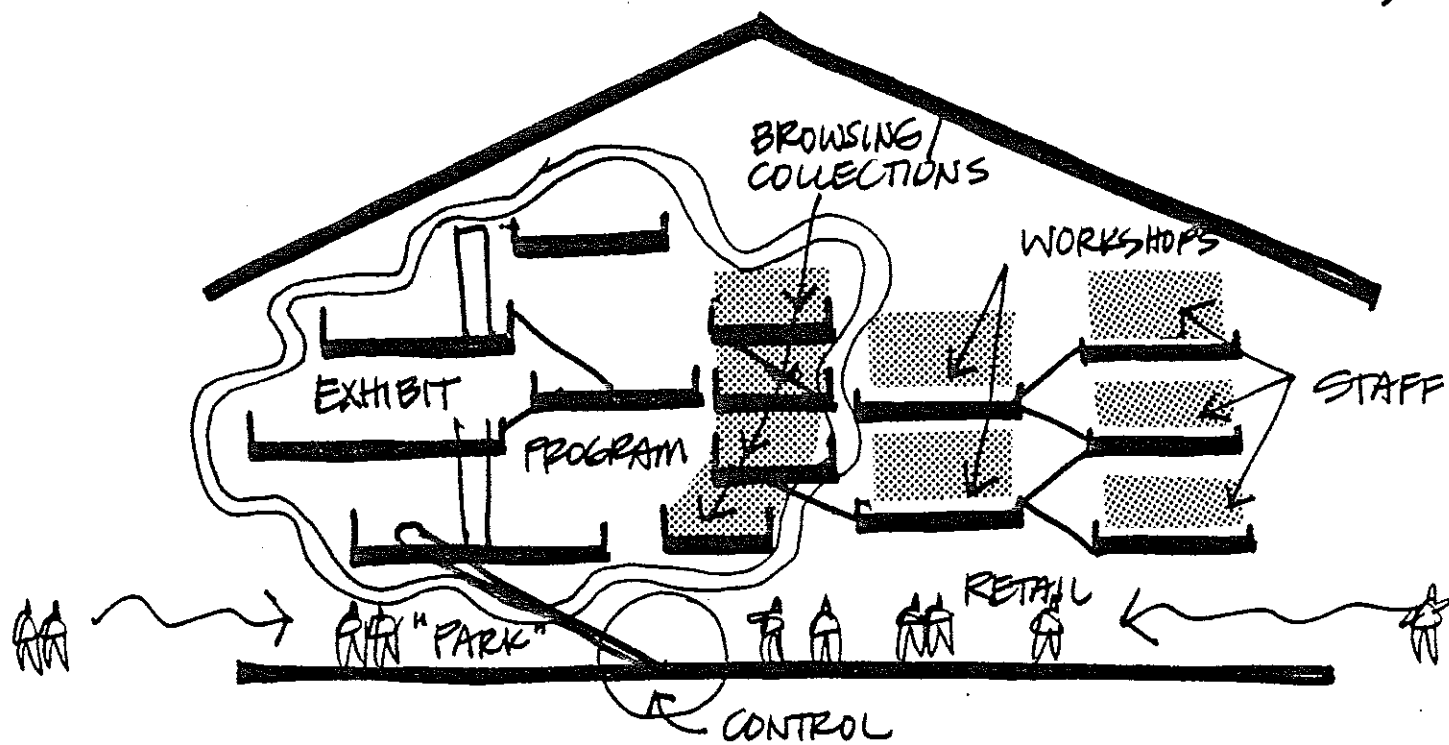
200

600

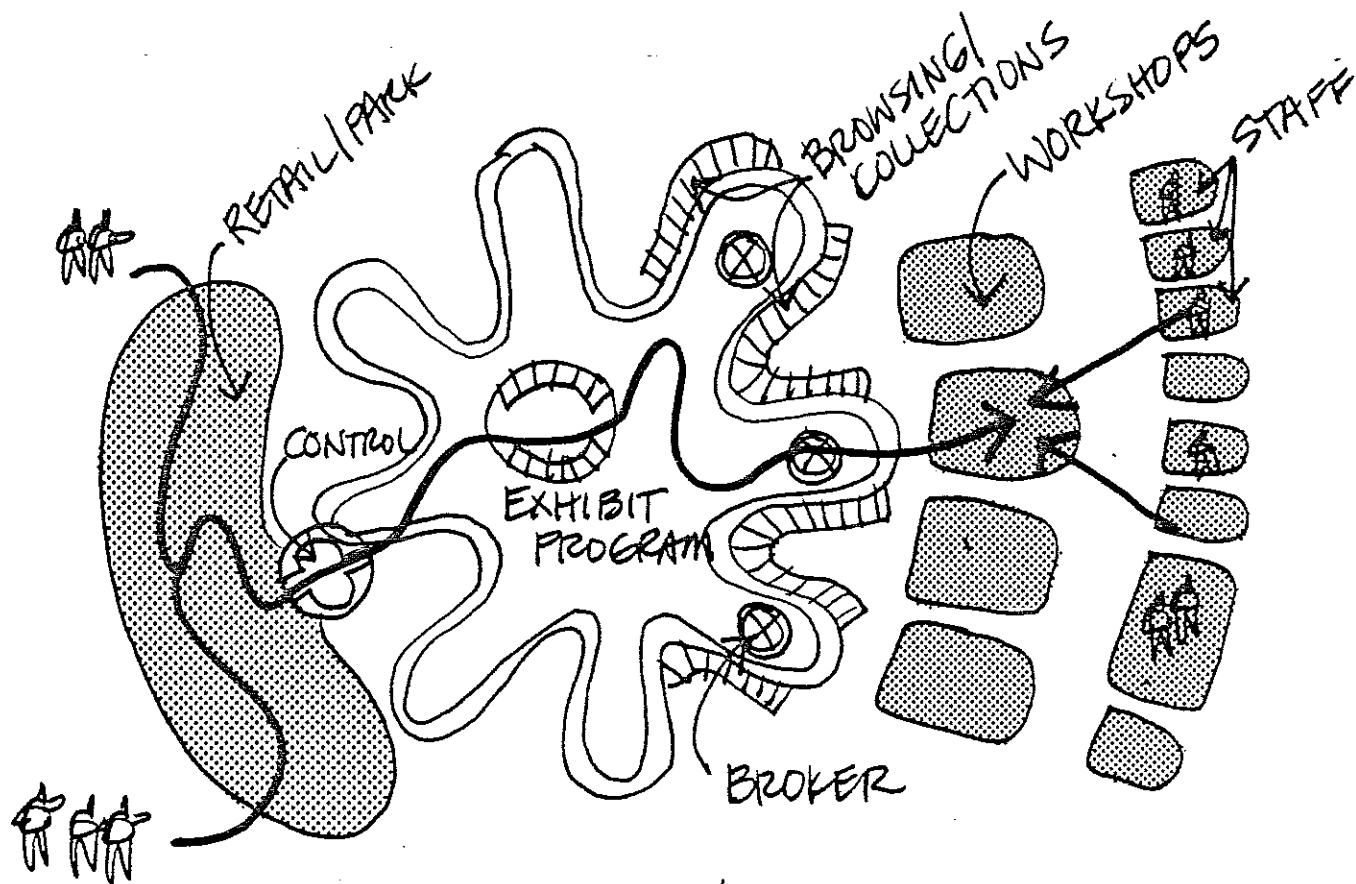
—

—

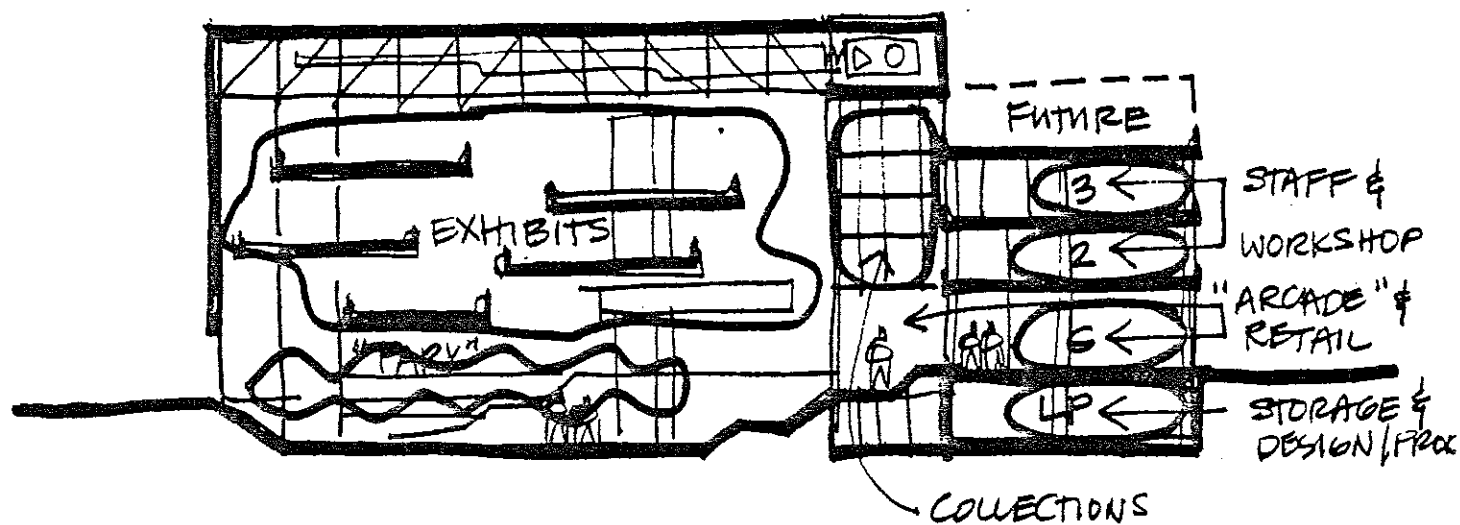
[7,500 \$]



PROGRAMMATIC SECTION



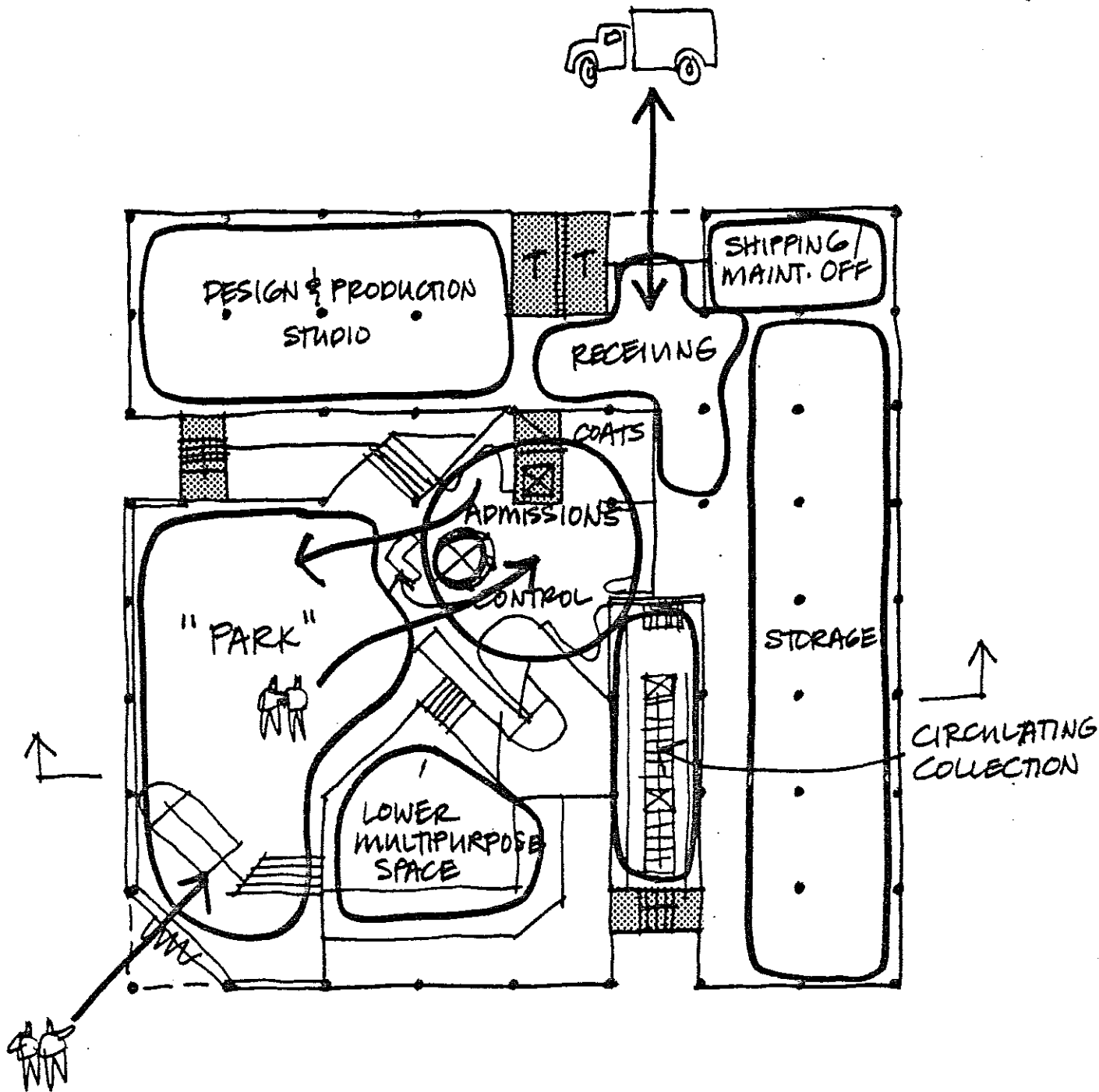
VISITOR EXPERIENCE / PROGRAM



0 20 40 60

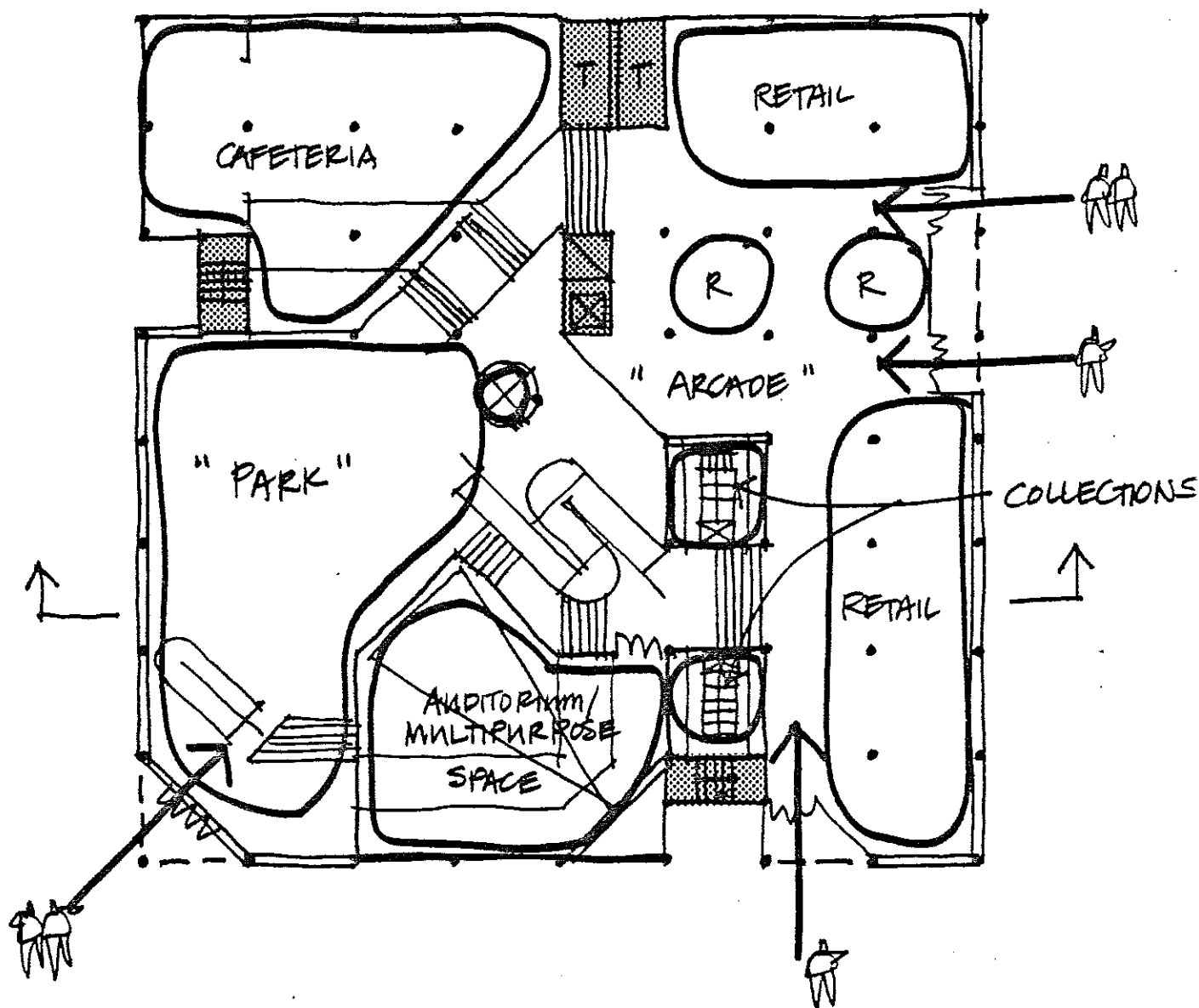
SECTION
TCM 8.21.73

A



0 20 40 60
LOWER PARK FLOOR
TCM 8.21.73

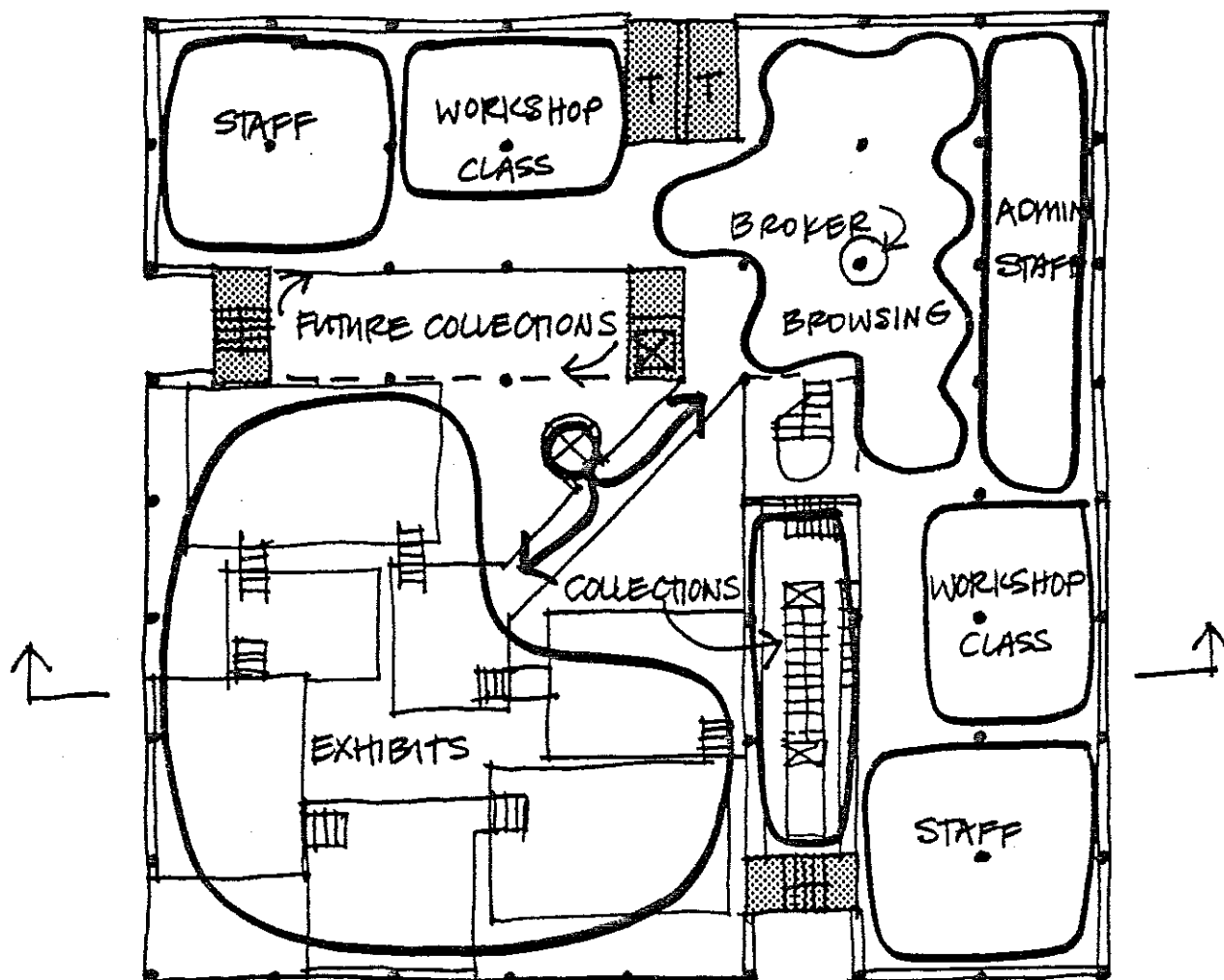
A



0 20 40 60

GROUND FLOOR
TCM 8.21.73

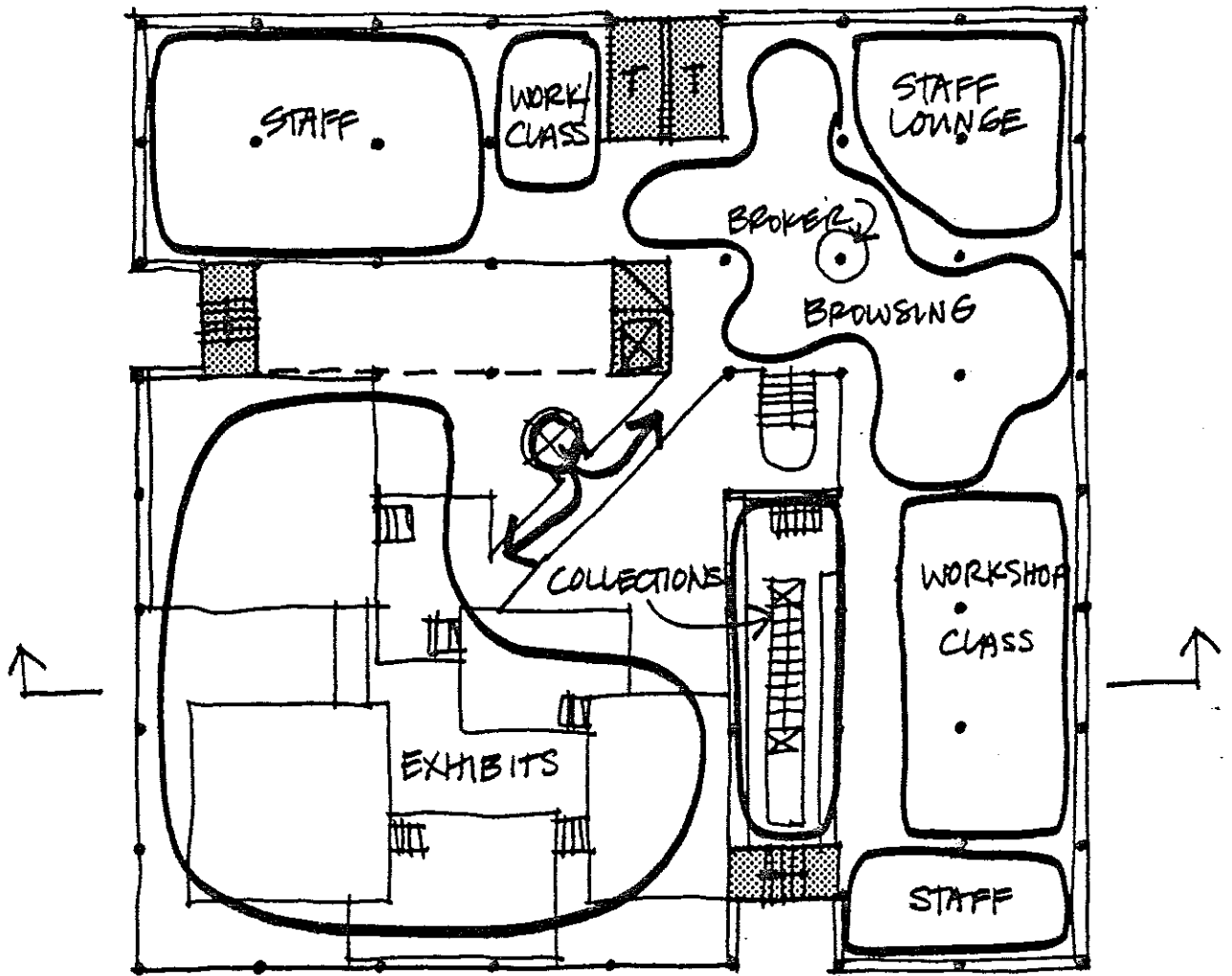
A



0 20 40 60

SECOND FLOOR
TCM 8.21.73

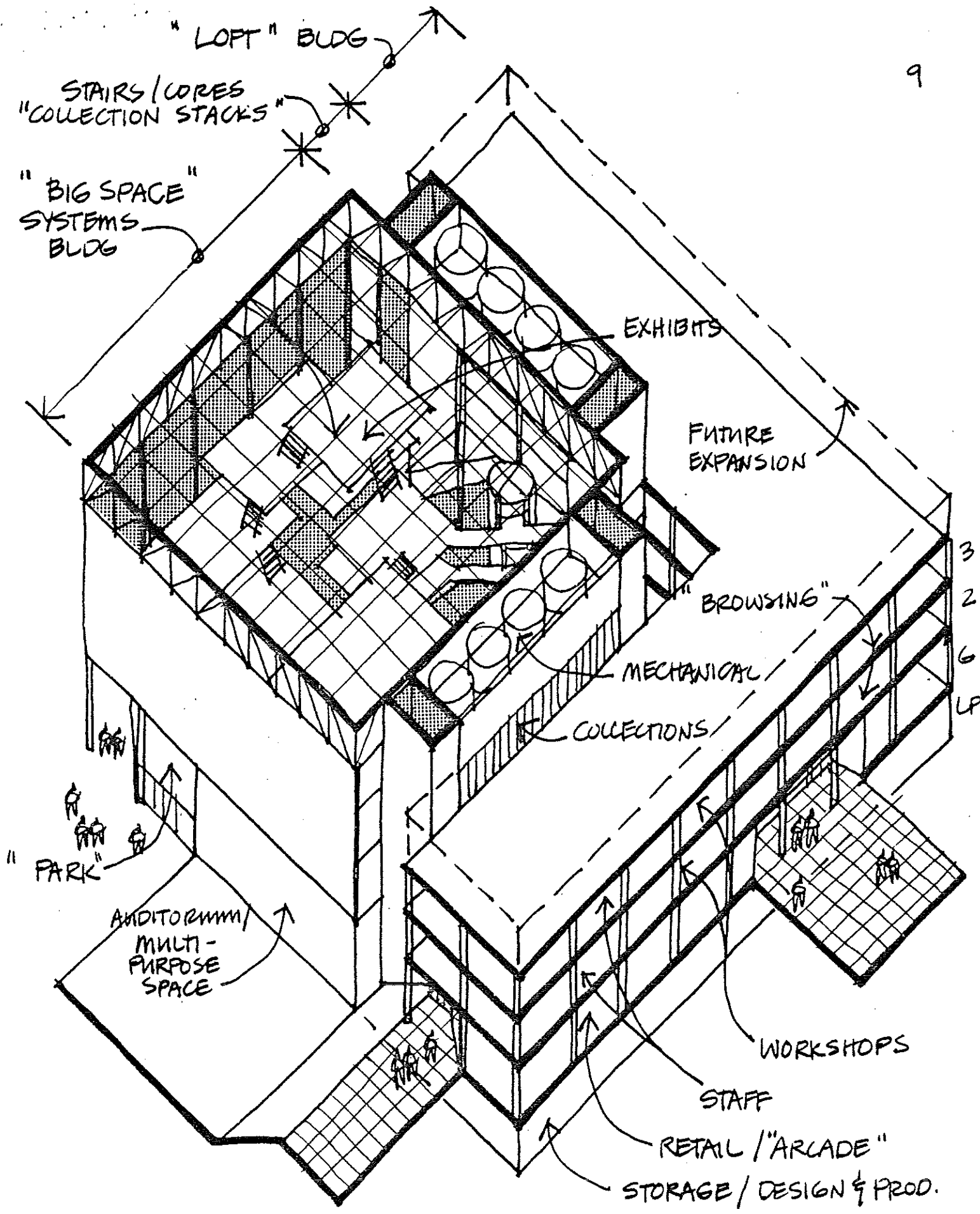
A



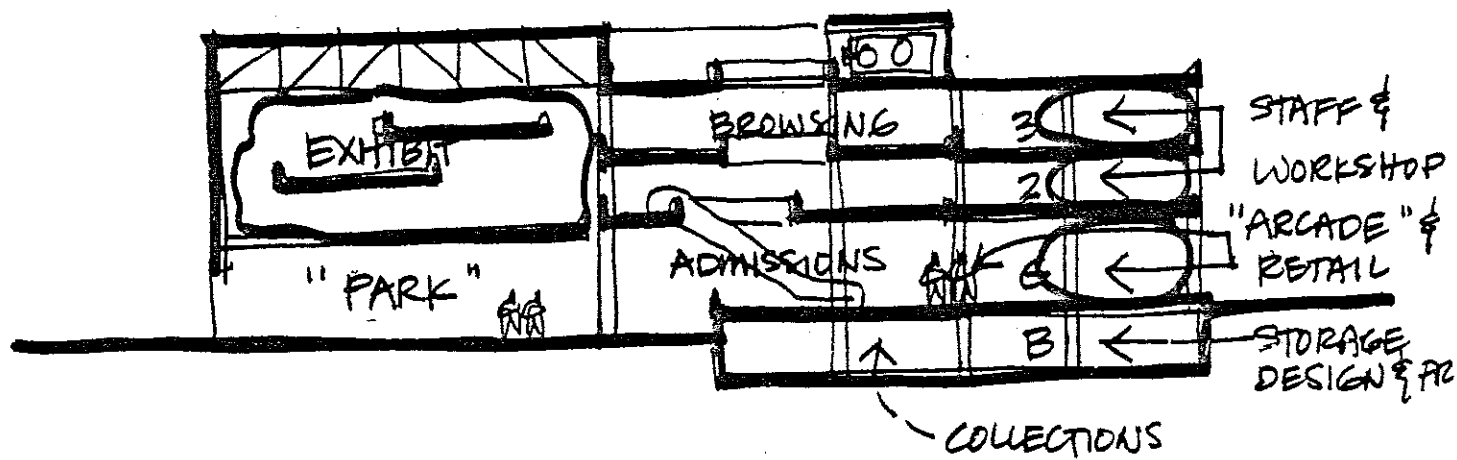
0 20 40 60

THIRD FLOOR
TCM 8.21.73

A



THE CHILDREN'S MUSEUM
8.24.73 **A**

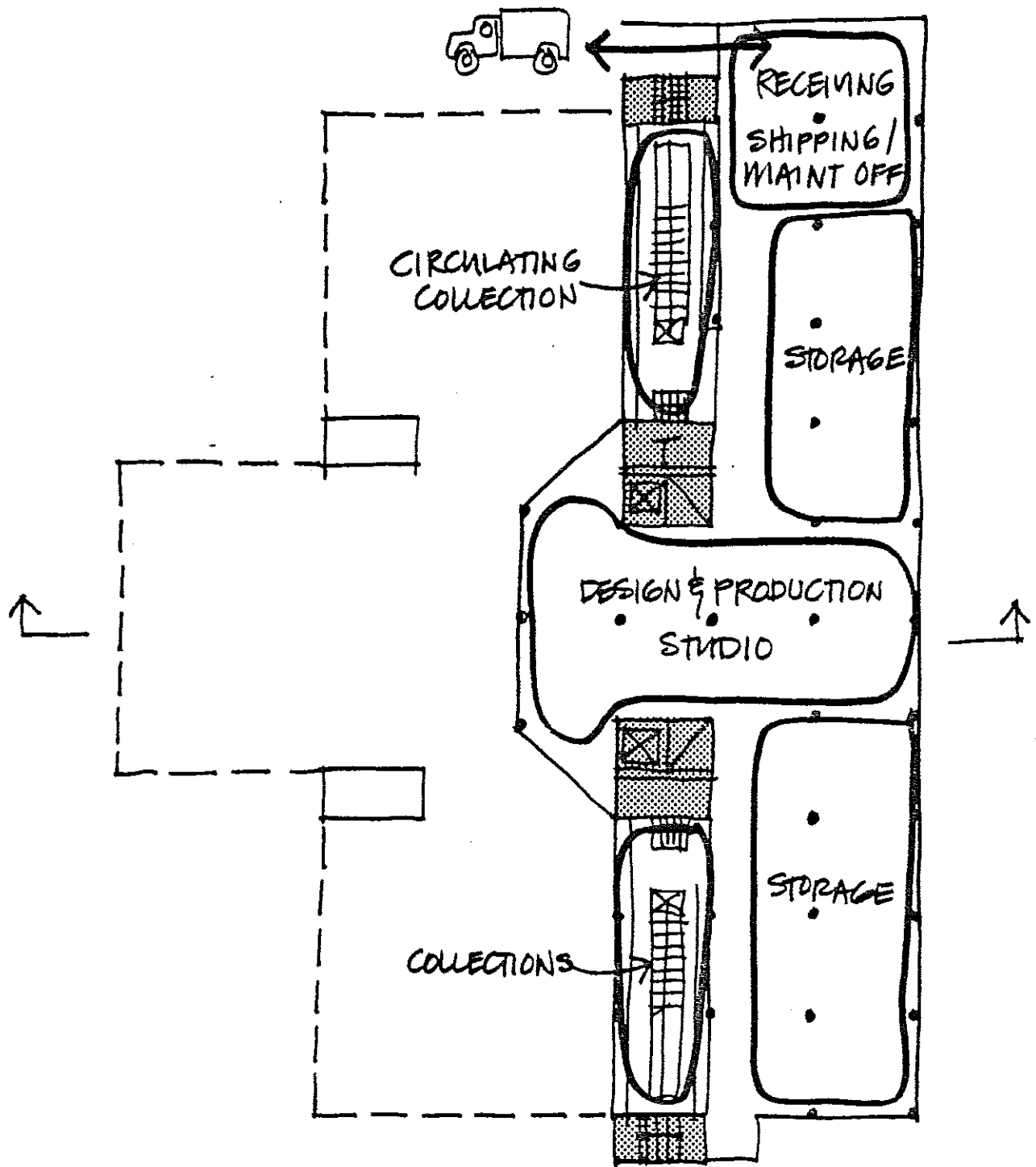


0 20 40 60

SECTION

TCM 8.21.73

B

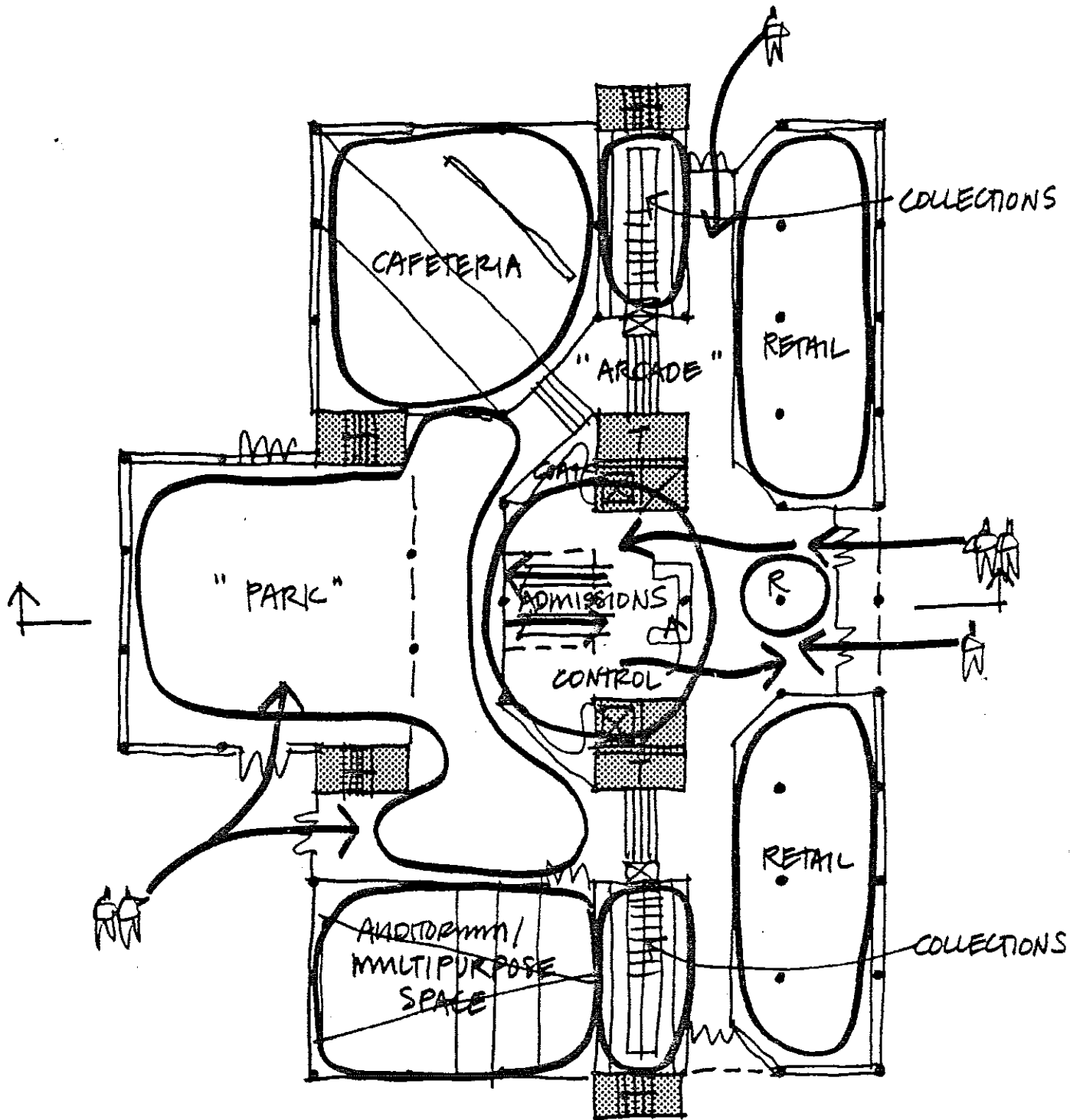


0 20 40 60

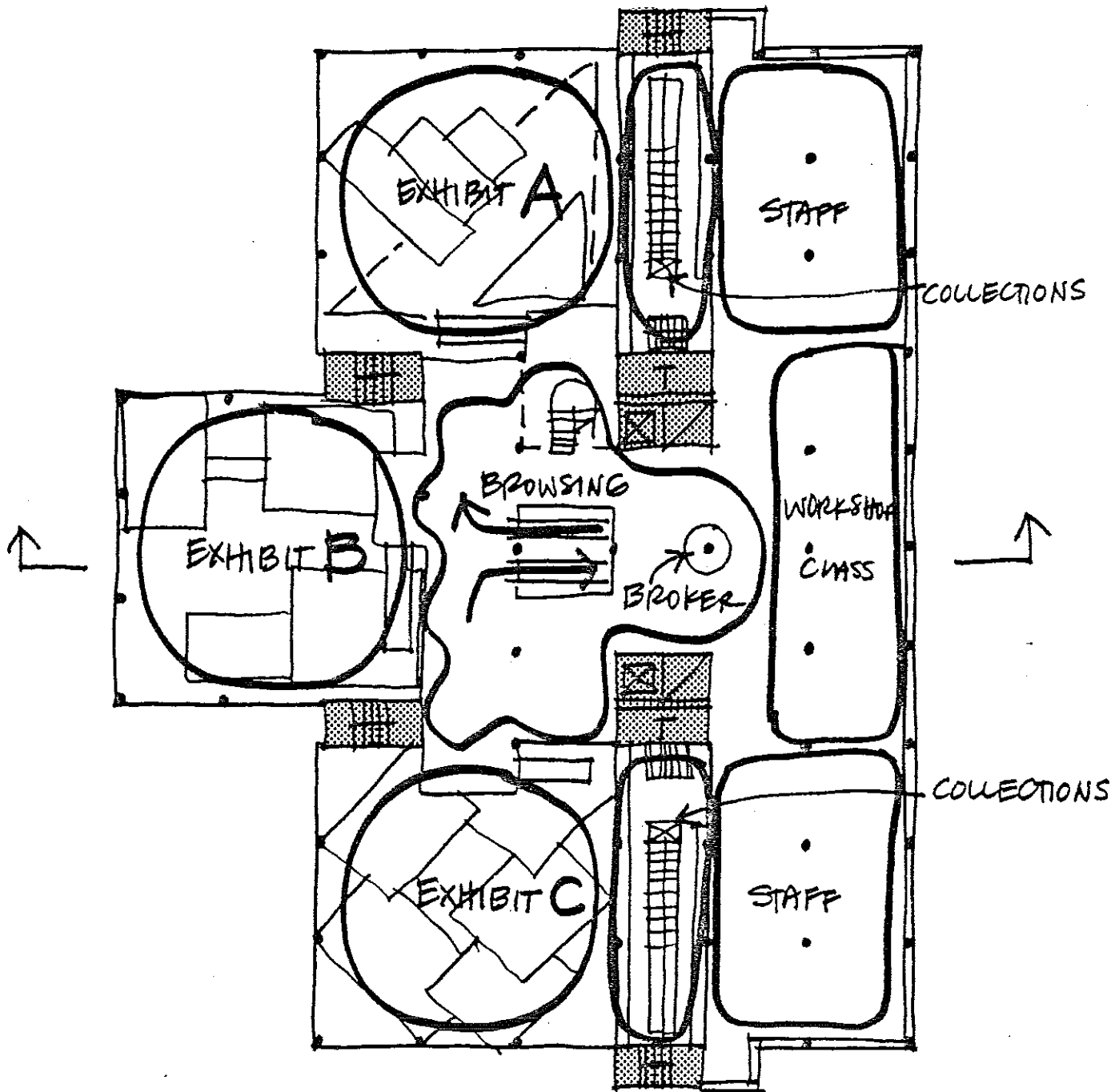
BASEMENT FLOOR

TCM 8.21.73

B



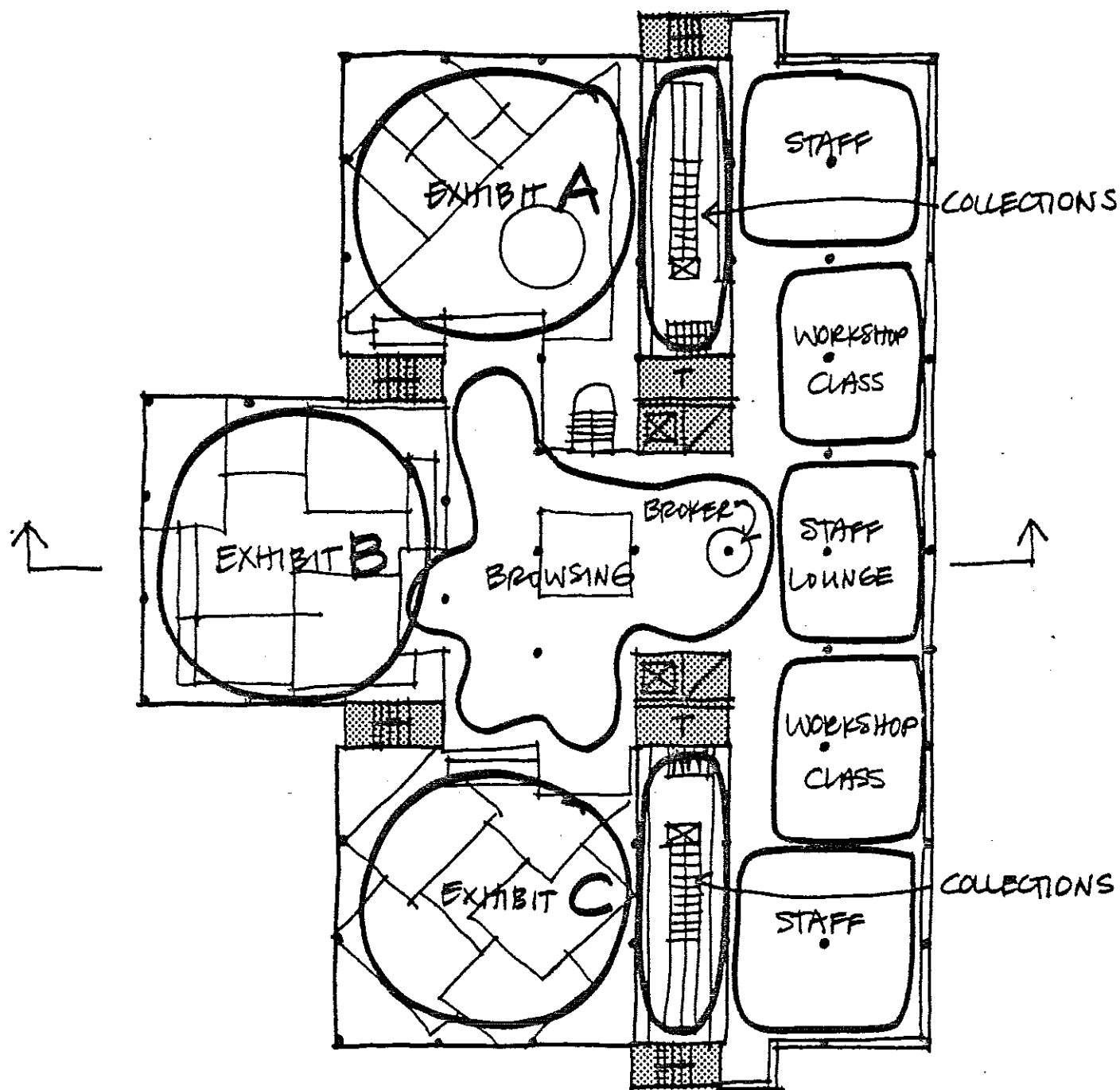
B



0 20 40 60

SECOND FLOOR
TCM 8.21.73

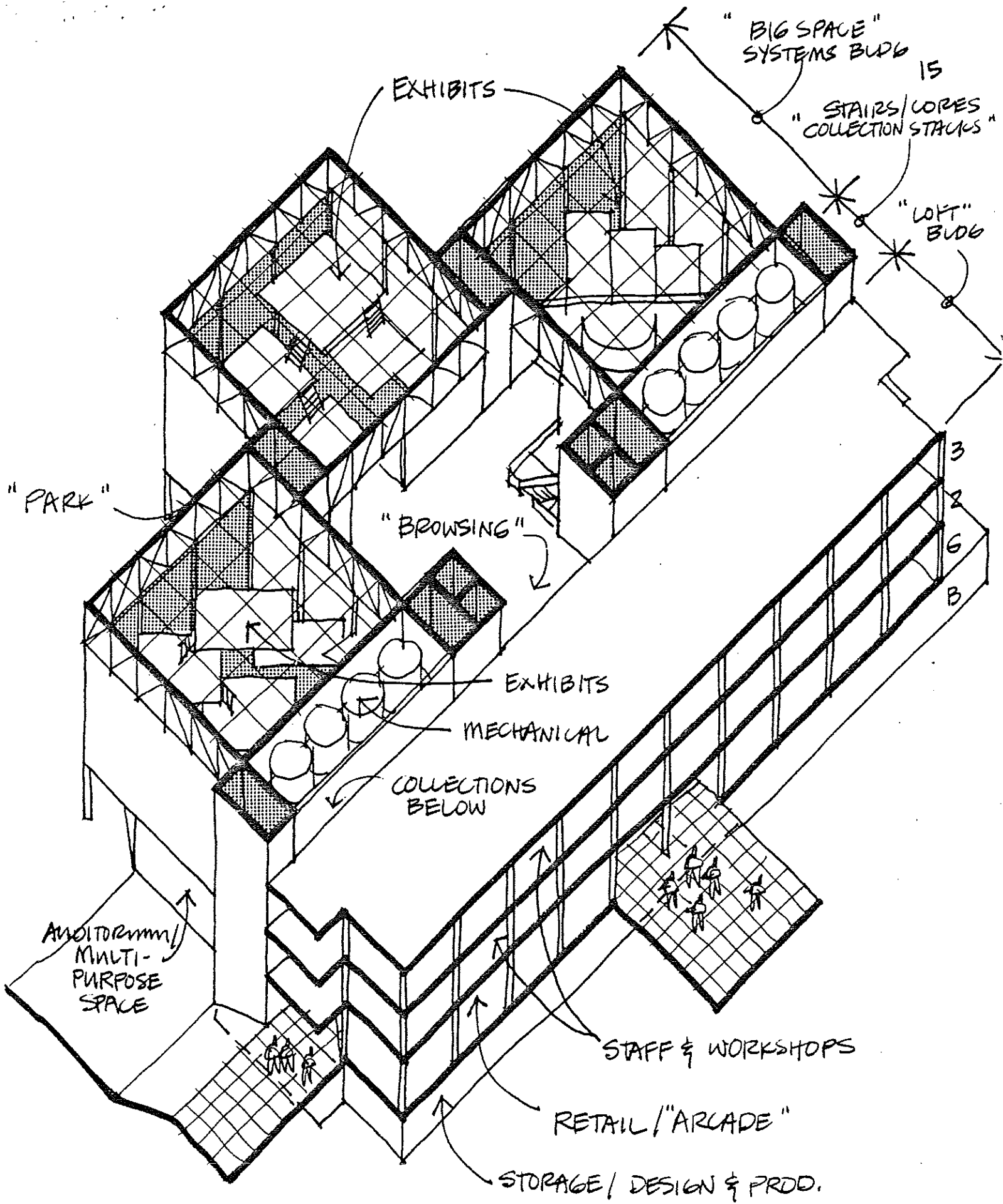
B



0 20 40 60

THIRD FLOOR
TCM 8.21.73

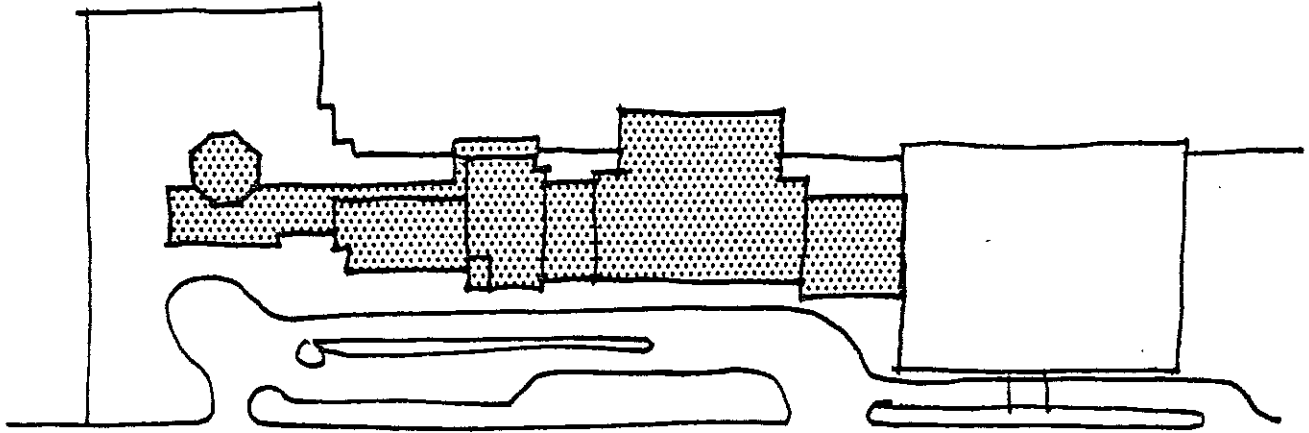
B



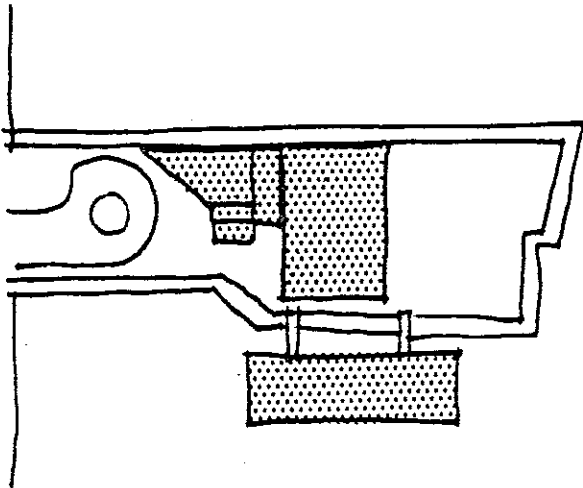
THE CHILDREN'S MUSEUM
A. 74. 72

B

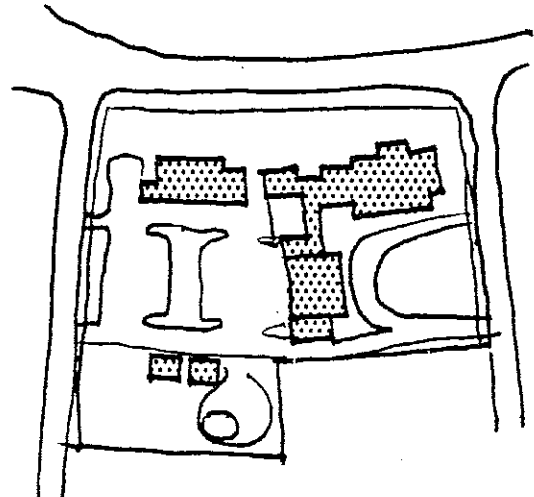
COMPARISONS WITH OTHER INSTITUTIONS (1" = 200'-0")₁₆



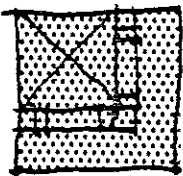
MUSEUM OF SCIENCE



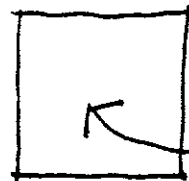
NEW ENGLAND AQUARIUM



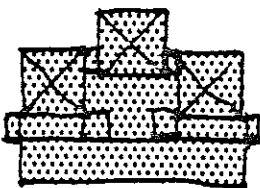
CHILDREN'S MUSEUM - JAMAICA W



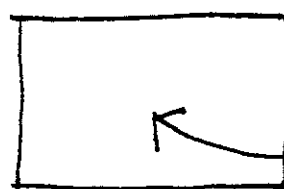
SCHEME A



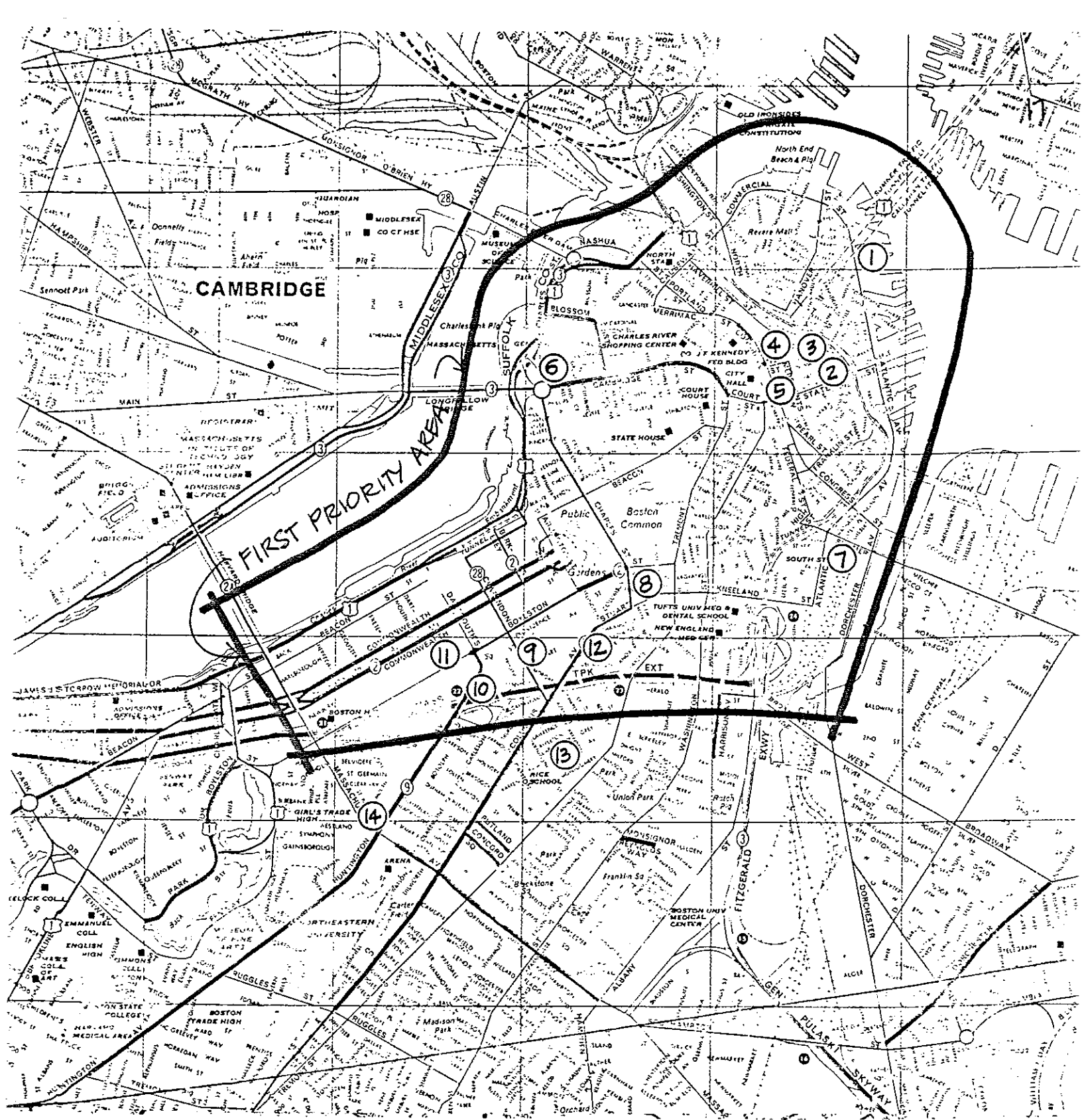
25,000± LAND AREA MINIMUM



SCHEME B



40,000± LAND AREA MINIMUM



POSSIBLE SITE OPTIONS:

1. QUINCY COLD STORAGE
2. D10 / QUINCY MARKET
3. E8 / SPAULDING & SLY
4. E9 / BLACKSTONE BLOCK
5. CCF SITE - STATE & CONG.
6. CHARLES ST. JAIL

8. PARK PLAZA / ELIOT ST. GARAGE
9. HANCOCK PAVILION
10. MASS. TURNPIKE AUTHORITY
11. BOYLSTON ST & EXETER
12. FIRST CADET ARMORY
13. BOSTON CENTER FOR THE ARTS

8.30.73 - SPACE PROGRAM BY DIVISIONS

THE CHILDREN'S MUSEUM

PROPOSED

EXISTING

VISITOR CENTER

24,380¢

10,670¢

EXHIBIT PROGRAM*

20,000

7400

DIRECTOR

(200)

WAIT./SEC.

(200)

MANAGER + ASSIST.

(200)

200

PROGRAM SUPERVISOR 6@80¢

200

80

PROGRAM AREA HEADS ←

480

150

ANIMAL CARE

800

WORK RM

400

240

ADMISSIONS

500

600

STORAGE

2000

2000

* OUTDOOR SPACE/INDIANS/ANIMALS

[7500]

RESOURCE CENTER

16,140 ¢

10,370 ¢

DIRECTOR

200

SEC/WAIT

200

} 360

DEVELOPMENT (2)

300

LEARNING SERVICES (8)

640

WORK RM

400

310

WORKSHOPS 3 @ 600

1800

1060

2 @ 300

600

CIRCULATING COLLECTION

500

100

STOR. & PREP. (2½)

1500

1560

REFERENCE COLLECTION (1½)

1500

810

TEACHERS SHOP (1½)

500

200

RECYCLE (2)

500

500

STORAGE

1500

1600

SPECIMEN COLLECTION (1)

6000

3870

8.30.73

THE CHILDREN'S MUSEUMCOMMUNITY SERVICES

DIRECTOR
 SEC / WAIT.
 STAFF / ASSIST. 3 @ 150
 WORK RM 3 @ 80
 WORKSHOP / CLASS 2 @ 600

PROPOSED2690 \$

200

200

690

400

1200

EXISTING1350 \$

110

60

480

350

350

STAFF & SUPPORT

DIRECTOR
 SEC / WAIT.
 ASSO. DIRECTOR
 PR.
 DEV.
 BUS. MGR.
 BKR.
 GENERAL WAITING
 XEROX
 MAIL
 COATS
 SUPPLIES
 MTG RMS
 STAFF LOUNGE + KIT.
 PRODUCTION STUDIO:
 SHOP
 WORKRM
 GRAPHICS
 DARK RM
 PAINT RM
 STORAGE
 STORAGE
 CHILDREN SHOP
 STORAGE
 SHIPPING / RECEIVING
 MAINT. OFFICE

11,150 \$

200

200

200

200

200

200

100

600

450

900

700

300

300

300

200

400

2500+

1000

1000

1000

200

7470 \$

80

130

210

100

60

400

260

310

410

730

370

200

90

150

330

2800

200

350

290

8.30.73

THE CHILDREN'S MUSEUMRETAIL

PARK / WAITING / RECREATION
 MULTIPURPOSE / AUD. SPACE (2000)
 CAFETERIA

PROPOSED15,000

8000

3000

4000

EXISTING

TOTAL NET AREA69,360 ϕ 29,860 ϕ